

Duurzame schepen van bouw tot sloop



Karlijn van de Kamp
NMT

AMBITIE EN TRANSITIE



Wouter Scheepens: Je hebt wetten nodig om duurzame bedrijven de wind in de zeilen te geven

Interview Wouter Scheepens

Hoe is het mogelijk dat Nederland een circulaire economie wil en tegelijkertijd een recyclebedrijf failliet laat gaan? 'Bedrijven die oplossingen bieden, hebben meer steun nodig', zegt Wouter Scheepens van MVO Nederland.

'Energieprobleem is urgent'

Opinie Hergebruik

Als we zo doorgaan, is de economie in 2050 bij lange na niet circulair

'Steentje bijdragen aan duurzaamheid'

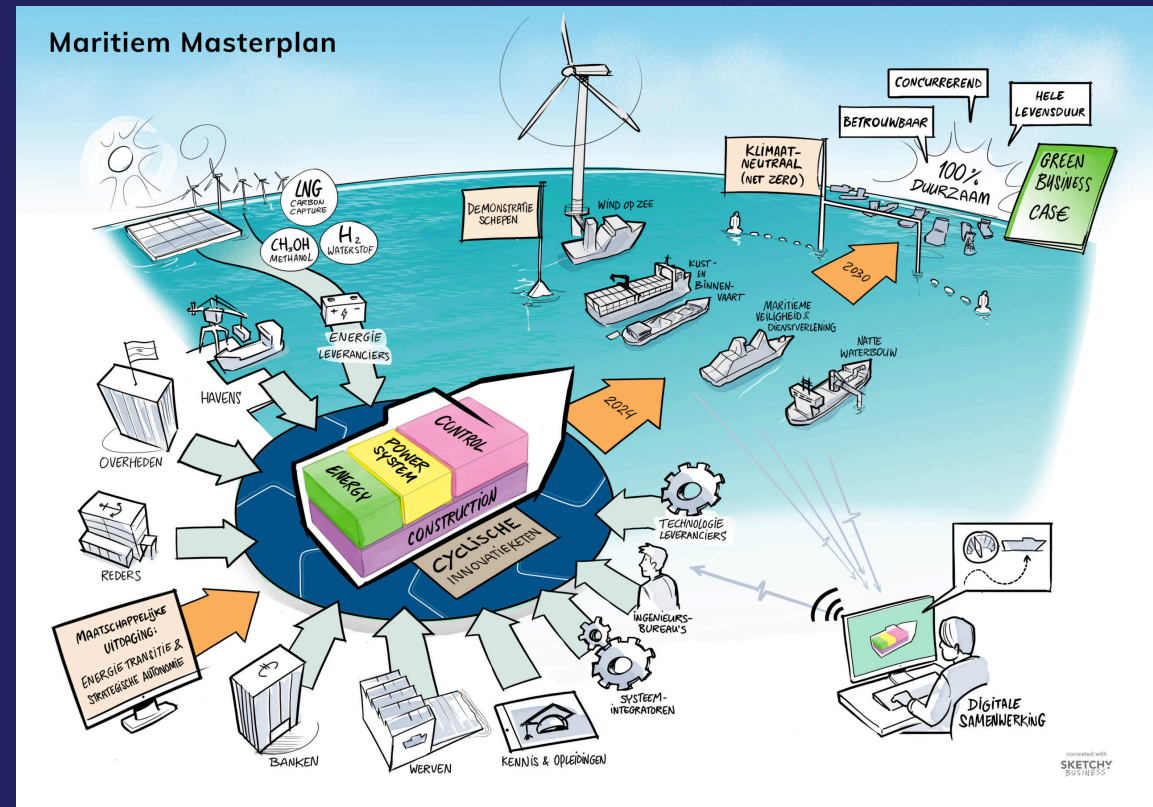
BESTRATEN De Bie Buitenwerk zet met roadprinter in op emissieloos werken

Arien de Jong, Business Developer Delta Technology

"De energietransitie is absoluut haalbaar"



AMBITIE EN TRANSITIE MARITIEM



This project has received fundings from the European Union's Horizon 2020 research and innovation programme under grant agreement No: 101138013



EXTERNAL & INTERNAL DRIVERS

2020

2030

2050



20% reduction of GHG emissions compared to 1990

20% renewable energy

20% reduction primary energy usage

55% reduction of GHG emissions compared to 1990 (Fit for 55 package)

27% renewable energy

32,5% reduction energy usage

Climate neutral economy

Circular economy

70% carbon intensity reduction of all ships compared to 2008

50% reduce GHG emissions from international shipping to the total annual GHG emissions to 2008



SOCIETAL CONCERNS

INDUSTRY CONCERNS





© STUDIO DIJKGRAAF

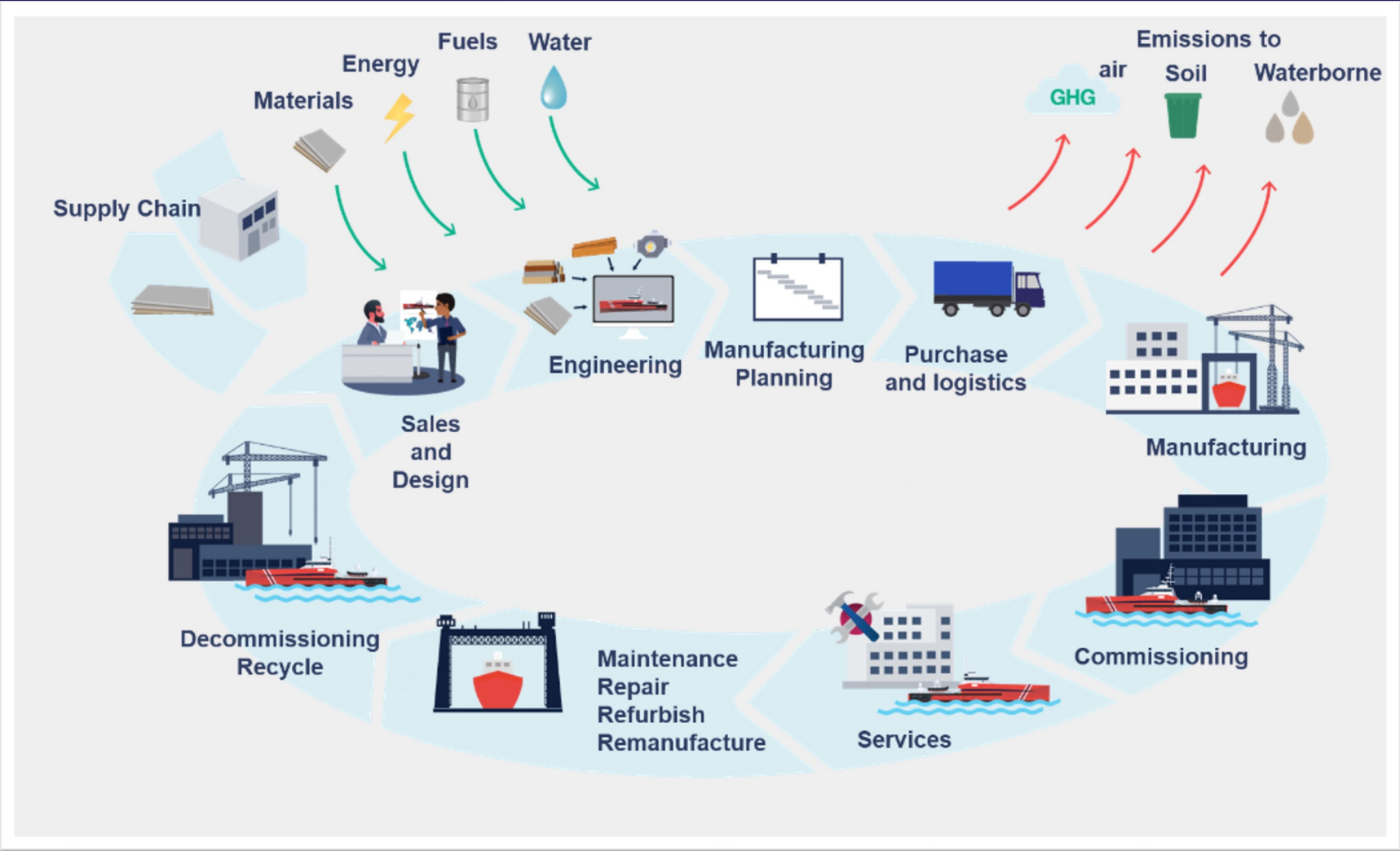




This project has received fundings from the European Union's Horizon 2020 research and innovation programme under grant agreement No: 101138013

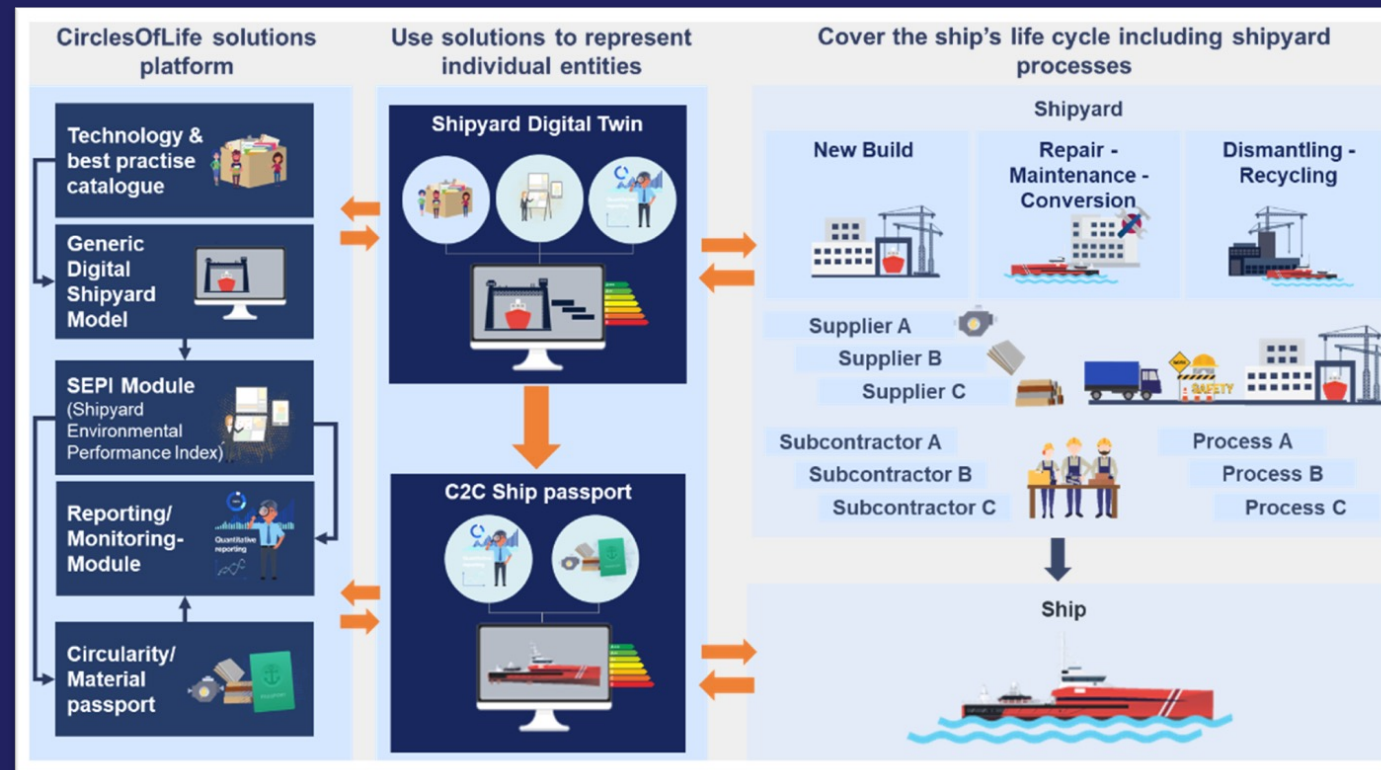


KETEN

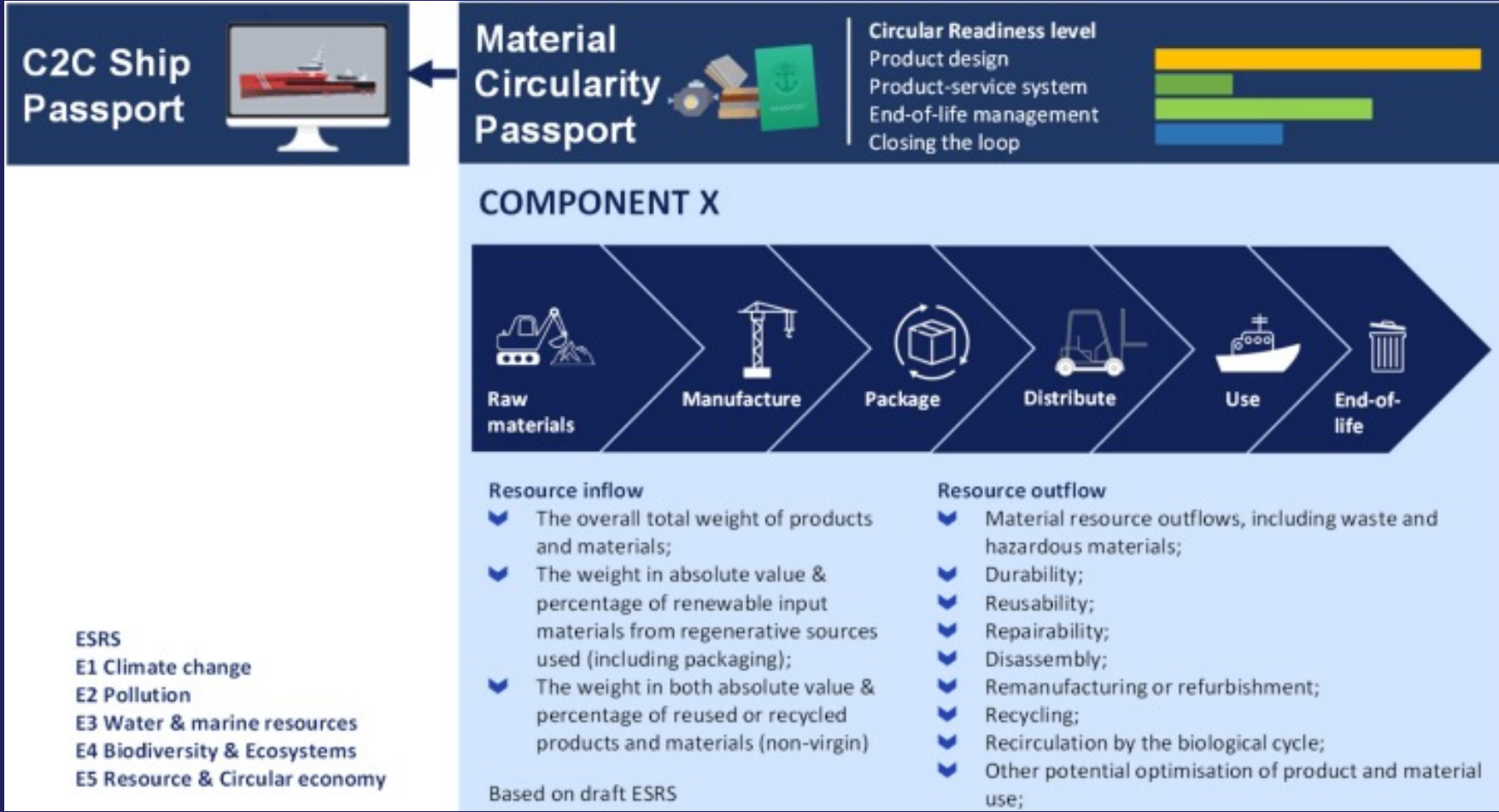


CIRCLES OF LIFE

ENHANCING MATERIAL CIRCULARITY AND LOWER EMISSIONS OF SHIP BUILDING PROCESSES IN ALL PHASES OF THE LIFE CYCLE



CRADLE 2 CRADLE SHIP PASAPORT



SEPI FRAMEWORK AND DIGITAL SHIPYARD MODEL



- Based on existing standards such as ISO 14000 series
- Green Marine Europe



11 PERFORMANCE INDICATORS



AQUATIC INVASIVE SPECIES



COMMUNITY IMPACTS



COMMUNITY RELATIONS



GREENHOUSE GAS EMISSIONS



POLLUTANT AIR EMISSIONS NOx



POLLUTANT AIR EMISSIONS SOx & PM



OILY DISCHARGE



SHIP RECYCLING



SPILL PREVENTION AND STORMWATER MANAGEMENT



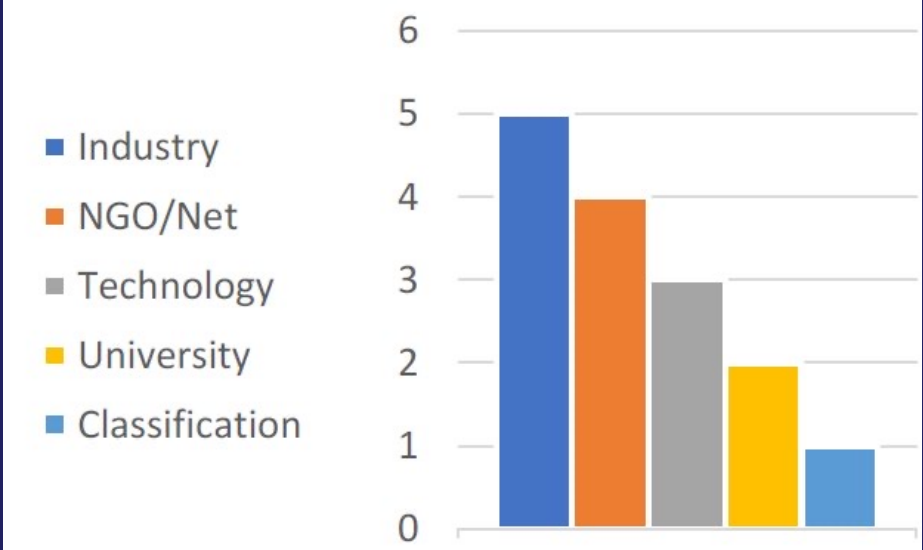
UNDERWATER NOISE



WASTE MANAGEMENT



PARTNERS



HARTELIJK DANK VOOR
JULLIE AANDACHT!



*Voor meer informatie:
www.circles-of-life.eu*

